



Eldon Grove NW3

Parkheath  
*Sold on Service*





## Eldon Grove, NW3

### Asking Price £1,250,000

### Share of Freehold

- An absolutely stunning 2 double bedroom apartment
- Set in an imposing semi detached period conversion
- Spanning the entire 2nd (top) floor
- First floor entrance upto an light laden landing
- Full of charm and character, with stunning roof top views
- Amazing roof top views
- Amazing 19ft reception
- Extremely bright and airy, over 1000 sq ft
- Share of freehold
- Positioned in one of Hampstead`s most sought after addresses, close to Hampstead Village, Hampstead Heath and Belsize Park



Belsize Park/Hampstead  
208 Haverstock Hill  
NW3 2AG  
Sales 020 7431 1234  
Lettings 020 7431 3104  
[nw3@parkheath.com](mailto:nw3@parkheath.com)

South/West Hampstead  
192 West End Lane  
NW6 1SG  
Sales & Lettings  
Tel 020 7794 7111  
[192@parkheath.com](mailto:192@parkheath.com)

Kensal Rise  
54-56 Chamberlayne Rd  
NW10 3JH  
Tel 020 8960 4845  
[kensal@parkheath.com](mailto:kensal@parkheath.com)

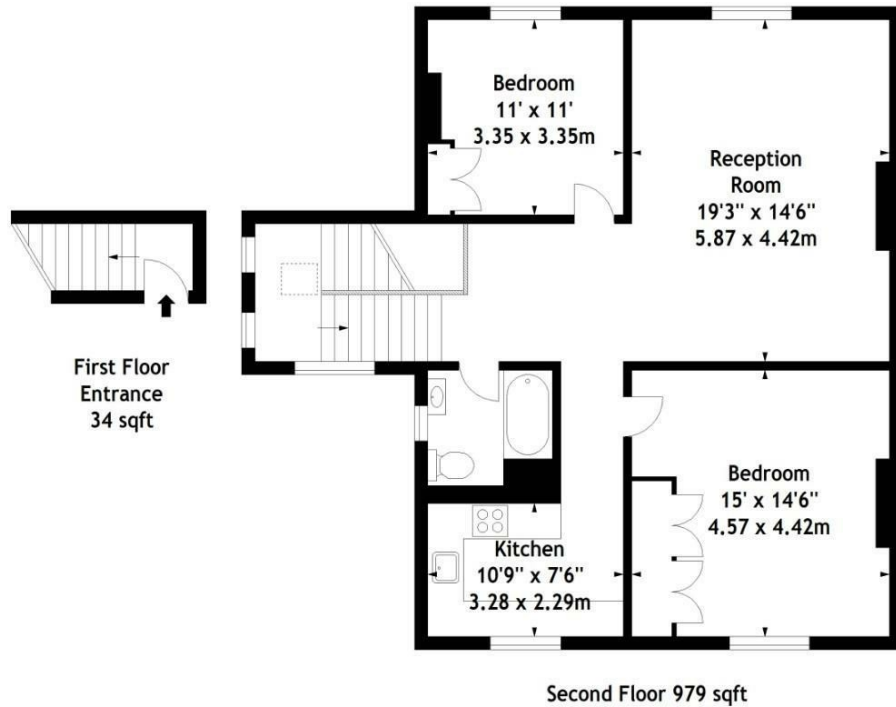
Property Management  
192 West End Lane  
NW6 1SG  
020 7433 6174  
[pm@parkheath.com](mailto:pm@parkheath.com)

**Parkheath**  
*Sold on Service*

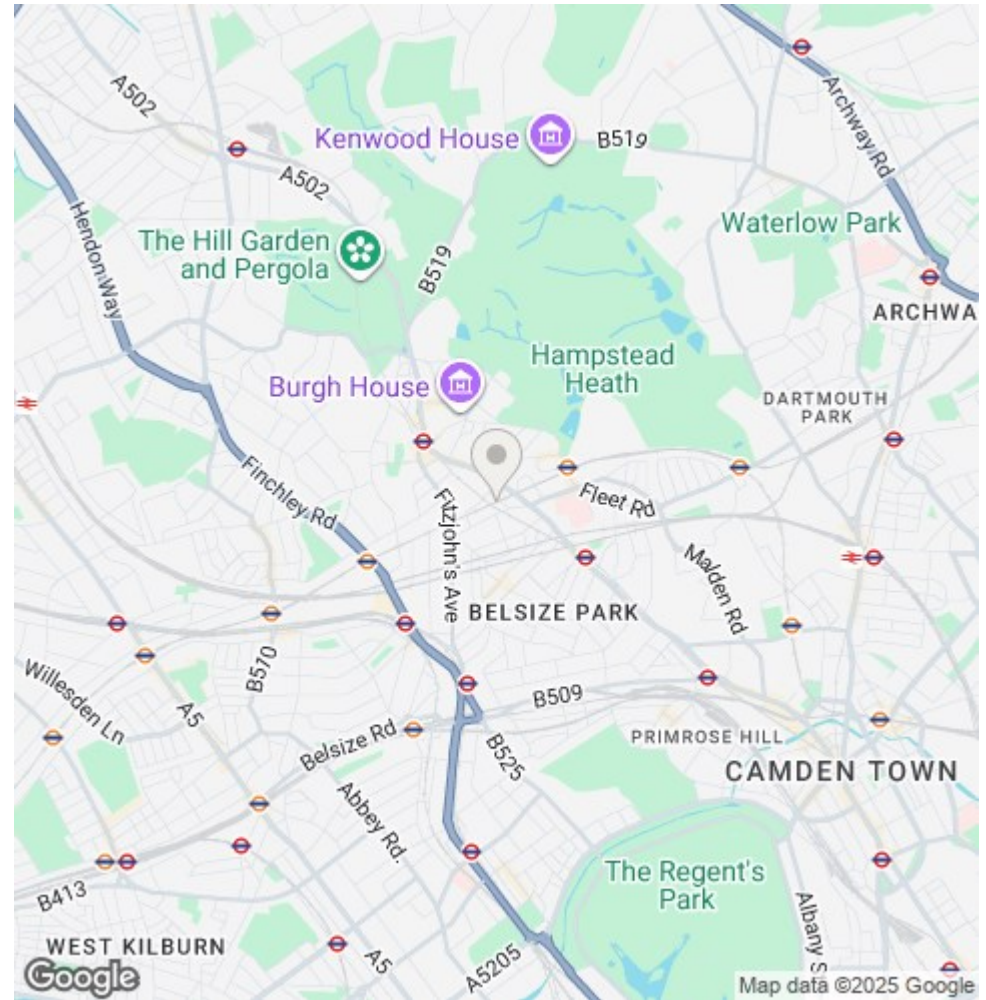
**Camden Tax band F**

[www.parkheath.com](http://www.parkheath.com)

Eldon Grove, NW3  
Approx. Gross Internal Area  
1013 Sq Ft - 94.11 Sq M



Measured in accordance with RICS guidelines. Every attempt is made to ensure accuracy, however all measurements are approximate. This floor plan is for illustrative purposes only and is not to scale.  
© Datagraphy Ltd 2015  
Photographs \* Floorplans \* Virtual Tours  
Tel: 0845 643 4401 www.datagraphy.com



The particulars do not constitute part of an offer or contract. The particulars, including text, photographs and plans, are for the guidance only of prospective purchasers/tenants and must not be relied upon as statements of fact. The descriptions provided therein represent the opinion of the author and whilst given in good faith should not be construed as statements of fact. Nothing in these particulars shall be deemed a statement that the property is in good condition or otherwise or that any services or facilities are in good working order. All measurements are approximate